

PRINCIPLE

This air-operated two-hand safety control unit must be activated simultaneously with both hands in order to start and maintain machine operation during dangerous operating conditions. It contributes to operator safety.

This unit complies with the EC Machinery Directive and contributes to the safety of machines.

OPERATION

Two control buttons must be pressed simultaneously (maximum interval: 0.2 s) to trigger the output signal.

Release of either control button cancels the output signal.

The output signal cannot be re-activated until both control buttons have been released.

The machine control logic authorises release of the control buttons once the dangerous cycle is finished.

The machine control logic requires release of both buttons between consecutive cycles.



SPECIFICATIONS

| | |
|--------------------------|---|
| FLUID | : air, filtered at 50µm, lubricated or not |
| PORTS | : supply by 4/6 hose outlets: hose 2.7 x 4 or 4/6 } see following page |
| NOMINAL DIAMETER | : 2.5 mm (KV 1,1) or 6 mm with amplifier type DM |
| OPERATING PRESSURE | : 2 to 8 bar |
| AMBIENT TEMPERATURE | : 0°C to +60°C |
| INTERVAL BETWEEN SIGNALS | : 0.2 s to 0.4 s |

CONSTRUCTION

• Twin-module unit (EN 574 type III B)

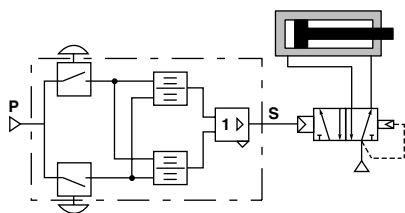
Metal box equipped with two 70 mm dia. mushroom head buttons protected by partitions + 1 lockable emergency stop (on request). Box including twin-module logic block and one YES function (logic block with EC type-examination certificate no.: 0526 520 1691 0197).

+ one subbase for later assembly of a pneumatic amplifier Ø 6 mm type B/DMP301/O (series 261)

APPLICATION DIAGRAM

Piloting with a poppet valve with spring or differential return

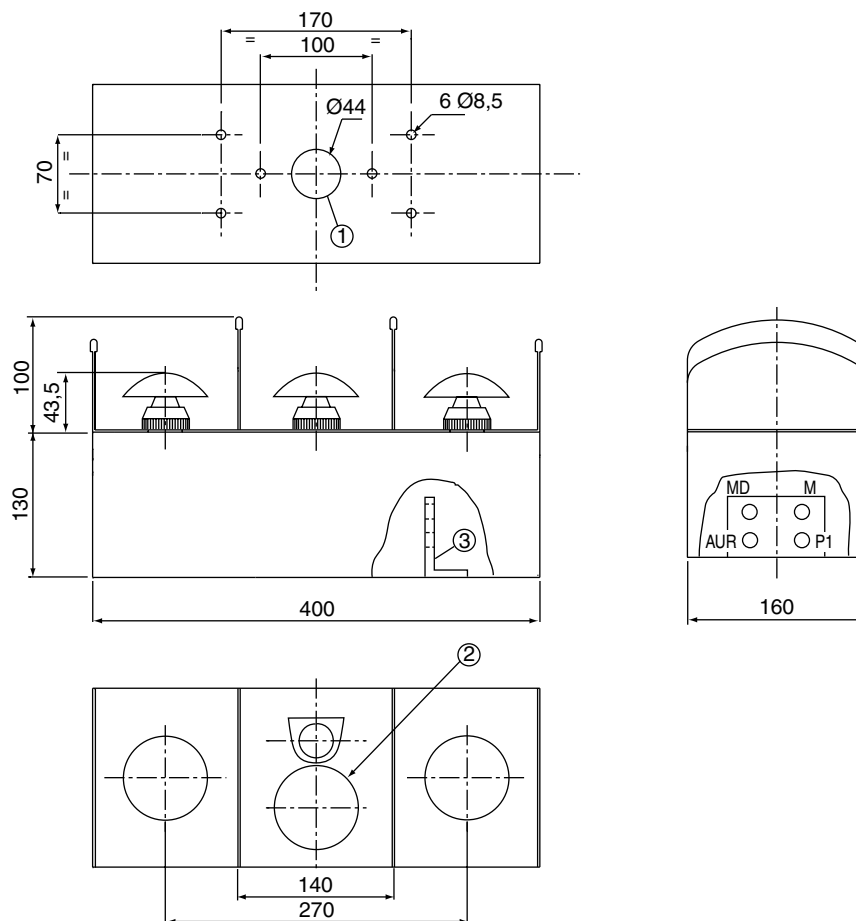
Example: piloting of a press cylinder



CHOICE OF EQUIPMENT

| Description | CODES |
|--|-----------------------------|
| Two-hand safety control unit (EN574 III B) with emergency stop | 335 00 005 + 461 800 201 |
| Two-hand safety control unit (EN574 III B) without emergency stop | 335 00 005 + 461 800 202 |

DIMENSIONS

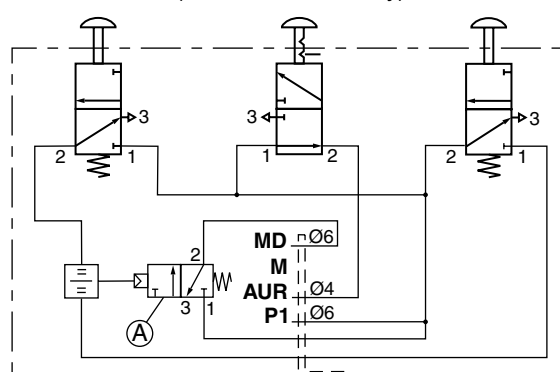
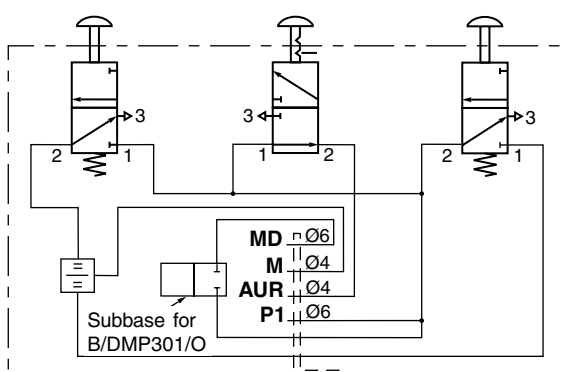


- ① Unit mountable on support column for pneumatic hose.
- ② Lockable emergency stop button
- ③ Pneumatic connection

WIRING DIAGRAM

Delivered

Version with amplifier type B/DMP301/O
(for on-site assembly)



ASSEMBLY PROCEDURE FOR A PNEUMATIC AMPLIFIER TYPE B/DMP301/O

- 1) Remove the blanking plate on the subbase 353 00 049 and proceed as follows:
 - Install the valve (A) DMP301/O - JOUCOMATIC code : 261 90 067 (code MABEC: X 655 433 507).
 - Fasten the flange B/DMP- JOUCOMATIC code : 881 26 110 (code MABEC: X 657 145 207).
 - Screw an angular fitting onto the B/DMP flange (code MABEC: X 153 250 103).
- 2) Disconnect outlet M from the connection passage on the partition and connect it to the above fitting.