

### FEATURES

- Valves are designed to eliminate water hammer when closing
- The unique closing construction reduces pressure spikes to a level eliminating the need for suppressors and other controls
- Two way slow closing shut-off valves to control cold and hot water, or other fluids compatible with the sealing materials used
- Valves require a minimum  $\Delta P$
- The solenoid valves satisfy all relevant EC directives

### GENERAL

Differential pressure 0,2 - 10 bar [1 bar = 100 kPa]  
Response times 295 - 560 ms

| fluids (*)         | temperature ranges (TS)   | seal materials (*)                         |
|--------------------|---------------------------|--|
| cold and hot water | 0 to +85°C<br>0 to +100°C | NBR (nitrile)<br>EPDM (ethylene-propylene) |



### CONSTRUCTION

Anti waterhammer test EN 60730-2-8

### MATERIALS IN CONTACT WITH FLUID

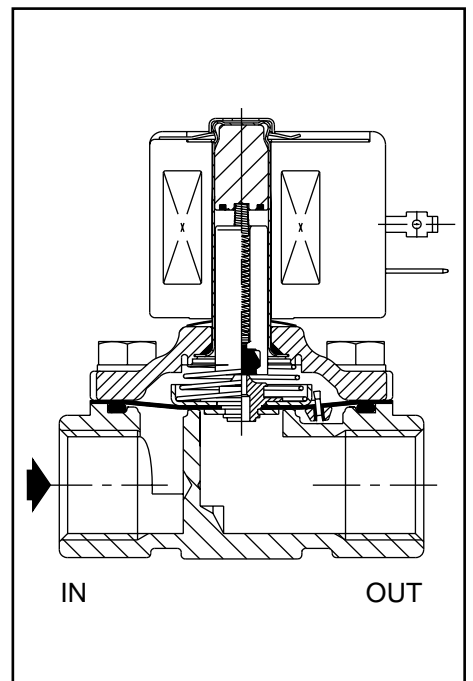
(\*) Ensure that the compatibility of the fluids in contact with the materials is verified

|                  |                 |
|------------------|-----------------|
| Body             | Brass           |
| Core tube        | Stainless steel |
| Core and plugnut | Stainless steel |
| Springs          | Stainless steel |
| Seat             | Brass           |
| Seal             | NBR or EPDM     |
| Diaphragm        | NBR or EPDM     |
| Shading coil     | Copper          |

### ELECTRICAL CHARACTERISTICS

|                         |  |
|-------------------------|--|
| Coil insulation class   | F  |
| Connector               | Spade plug (cable $\varnothing$ 6-10 mm)           |
| Connector specification | ISO 4400 / EN 175301-803, form A                   |
| Electrical safety       | IEC 335  |
| Standard voltages       | DC (=) : 24V<br>AC (~) : 24V - 115V - 230V / 50 Hz |

| coil type | power ratings    |           |      |                   | ambient temperature range (TS) (°C) | protection   |
|-----------|------------------|-----------|------|-------------------|-------------------------------------|--------------|
|           | inrush ~<br>(VA) | holding ~ |      | hot/cold =<br>(W) |                                     |              |
|           |                  | (VA)      | (W)  |                   |                                     |              |
| CM6-FT    | 34,0             | 15,6      | 6,0  | -                 | -20 to +75                          | moulded IP65 |
| CMXX-FT   | 55,0             | 23,0      | 10,5 | 9 / 11,2          |                                     |              |



### SPECIFICATIONS

| pipe size                               | orifice size | flow coefficient Kv<br>(m³/h) (l/min) |         | operating pressure differential (bar) |                |               |     | coil type |         | catalogue number | OPTIONAL    |   |   |
|---|--------------|---------------------------------------|---------|---------------------------------------|----------------|---------------|-----|-----------|---------|------------------|-------------|---|---|
|   |              |                                       |         | min.                                  | maximum (PS)   |               | FPM |           |         |                  | CR          |   |   |
|   |              |                                       |         |                                       | cold water (*) | hot water (*) |     |           |         |                  |             |   |   |
| Rp                                      | (mm)         | (m³/h)                                | (l/min) |                                       |                |               |     |           |         |                  |             |   |   |
| <b>Brass body, NBR seals and discs</b>  |              |                                       |         |                                       |                |               |     |           |         |                  |             |   |   |
| 3/8                                     | 16           | 2,6                                   | 43      | 0,20                                  | 7              | 2,8           | -   | -         | CMXX-FT | CMXX-FT          | SCE210.893  | V | J |
| 3/8                                     | 16           | 2,6                                   | 43      | 0,35                                  | 10             | 7             | -   | -         | CM6-FT  | CMXX-FT          | SCE210.801  | V | J |
| 1/2                                     | 16           | 3,1                                   | 52      | 0,20                                  | 7              | 2,8           | -   | -         | CMXX-FT | CMXX-FT          | SCE210.894  | V | J |
| 1/2                                     | 16           | 3,4                                   | 57      | 0,35                                  | 10             | 7             | -   | -         | CM6-FT  | CMXX-FT          | SCE210.802  | V | J |
| 3/4                                     | 19           | 4,3                                   | 72      | 0,20                                  | 7              | 2,8           | -   | -         | CMXX-FT | CMXX-FT          | SCE210.895  | V | J |
| 3/4                                     | 19           | 4,3                                   | 72      | 0,35                                  | 10             | 7             | -   | -         | CM6-FT  | CMXX-FT          | SCE210.809  | V | J |
| <b>Brass body, EPDM seals and discs</b> |              |                                       |         |                                       |                |               |     |           |         |                  |             |   |   |
| 3/8                                     | 16           | 2,6                                   | 43      | 0,20                                  | -              | -             | 7   | -         | CMXX-FT | -                | SCE210.893E |   |   |
| 3/8                                     | 16           | 2,6                                   | 43      | 0,35                                  | -              | -             | 10  | -         | CM6-FT  | -                | SCE210.801E |   |   |
| 1/2                                     | 16           | 3,1                                   | 52      | 0,20                                  | -              | -             | 7   | -         | CMXX-FT | -                | SCE210.894E |   |   |
| 1/2                                     | 16           | 3,4                                   | 57      | 0,35                                  | -              | -             | 10  | -         | CM6-FT  | -                | SCE210.802E |   |   |
| 3/4                                     | 19           | 4,3                                   | 72      | 0,20                                  | -              | -             | 7   | -         | CMXX-FT | -                | SCE210.895E |   |   |
| 3/4                                     | 19           | 4,3                                   | 72      | 0,35                                  | -              | -             | 10  | -         | CM6-FT  | -                | SCE210.809E |   |   |

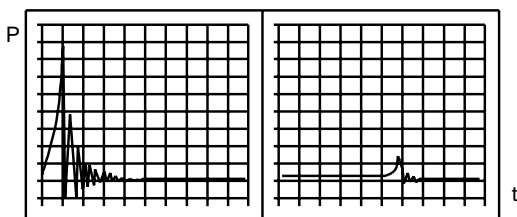
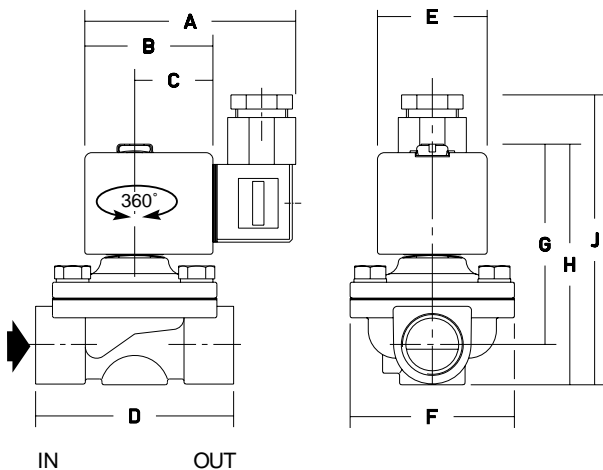
### OPTIONS

- Valves can also be supplied with FPM (fluorelastomer) and CR (chloroprene) diaphragms, seals and discs. Use the appropriate optional suffix letter for identification
- Waterproof enclosure with embedded screw terminal coil and Pg 13,5 cable gland to meet CEE-10 (IP67)
- Explosionproof enclosures for hazardous locations according to "ATEX/CENELEC" and national standards
- Explosionproof and watertight enclosures according to "NEMA" standards
- Compliance with "UL" and "CSA" standards
- For protection against corrosion caused by the environment or the fluid, contact us
- Mounting brackets
- Plug with visual indication and with peak voltage suppression or with cable length of 2m

### INSTALLATION

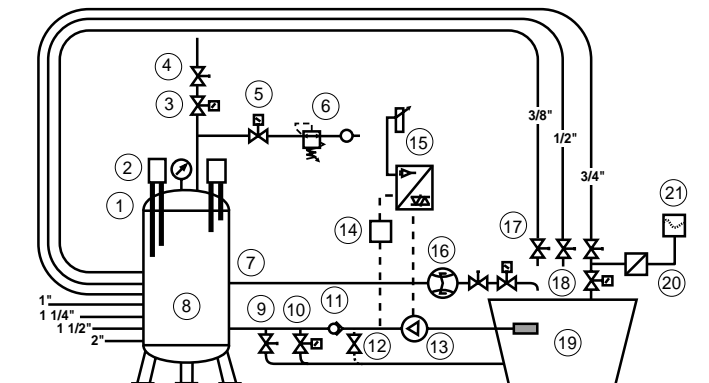
- The valves can be mounted in any position without affecting operation
- Pipe connection identifier is: E = Rp (ISO 7/1)
- The third digit in the catalogue number indicates the standard pipe connection
- Other pipe threads are available on request
- Installation/maintenance instructions are included with each valve
- Spare Parts Kit and replacement coils are available

### DIMENSIONS (mm), WEIGHT (kg)



'Standard' Quick Closing Water Valve      ASCO's Slow Closing Water Valve

ARRANGEMENT FOR THE MEASUREMENT OF TRANSIENT PRESSURE CAUSED BY WATER VALVES



- |                      |                               |
|----------------------|-------------------------------|
| ① Lever controller   | ⑪ Non-return valve            |
| ② Pressure gauge     | ⑫ By-pass valve               |
| ③ Bleeder valve      | ⑬ Pump                        |
| ④ Reducing valve     | ⑭ Pressure indicator for pump |
| ⑤ Slide valve        | ⑮ Frequency converter         |
| ⑥ Pressure regulator | ⑯ Integrating flow meter      |
| ⑦ Supply pipe        | ⑰ Ball valves                 |
| ⑧ Compensating tank  | ⑱ Test valves                 |
| ⑨ Safety valve       | ⑲ Water container             |
| ⑩ Solenoid valve     | ⑳ Pressure indicator          |
|                      | ㉑ Recorder                    |

| catalogue number<br>SCE210 |     | A  | B  | C  | D  | E  | F  | G  | H   | J   | weight (1) |
|----------------------------|-----|----|----|----|----|----|----|----|-----|-----|------------|
| 801 - 802 (E)              | (~) | 75 | 45 | 27 | 70 | 39 | 58 | 72 | 86  | 103 | 0,8        |
| 893 - 894 (E)              | (~) | 80 | 50 | 30 | 70 | 45 | 58 | 85 | 99  | 116 | 1,2        |
| 809 (E)                    | (~) | 75 | 45 | 27 | 71 | 39 | 58 | 76 | 92  | 109 | 0,8        |
| 895 (E)                    | (~) | 80 | 50 | 30 | 71 | 45 | 58 | 89 | 106 | 123 | 1,3        |
| 801 - 893                  | (=) | 80 | 50 | 30 | 70 | 45 | 58 | 85 | 99  | 116 | 1,2        |
| 802 - 894                  | (=) | 80 | 50 | 30 | 70 | 45 | 58 | 85 | 99  | 116 | 1,2        |
| 809 - 895                  | (=) | 80 | 50 | 30 | 71 | 45 | 58 | 89 | 106 | 123 | 1,3        |

(1) incl. coil and connector      (~) AC only      (=) DC only

All leaflets are available on: [www.ascojoucomatic.com](http://www.ascojoucomatic.com)