



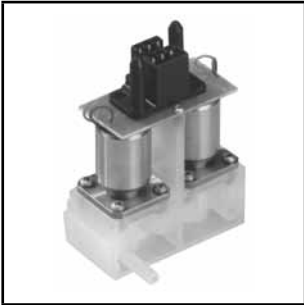
Type:
Series 302 solenoid valve module

Application:
Dentist's chair. Compact unit for the supply of compressed driving air to dental equipment, or water and air for dental cleaning. The module incorporates a SUB-D socket for easy electrical connection.



Type:
2/2 solenoid valve module

Application:
Cleaning of dental equipment, incorporating general cleaning agent supply line.



Type:
2-station solenoid valve module

Application:
2 solenoid-operated diaphragm valves assembled on a PFA subbase for the control of chemical analysis systems (HPLC). The unit is provided with a printed circuit board for easy connection.



Type:
Solenoid valve module with separator diaphragm

Application:
Artificial respiration control (oxygen administration).



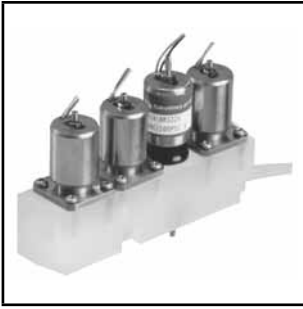
Type:
Rocker-type solenoid valve module

Application:
Haematology



Type:
Pinch-type solenoid valve module

Application:
Microbiology (nutrient supply for bacterial growth).



Type:

4-station solenoid valve module

Application:

3 solenoid-operated diaphragm valves and 1 direct operated 3/2 solenoid valve mounted on a PCTFE subbase for the control of chemical analysis systems (HPLC).

Type:

4-station solenoid valve module

Application:

4 solenoid-operated diaphragm valves assembled star-like on a PEEK subbase to be used in chemical analysis systems.



Type:

Series 302 solenoid valve module

Application:

Unit with 3/2 solenoid valves equipped with magnetic latch coils to operate a dia. 8 mm main valve for the control of artificial respiration.

SOLENOID VALVES



Type :

Series 110 rocker valve with threaded connections

Application:

Solenoid valve with shielded core construction and PEEK body suitable for chemical analysis systems (FPLC systems).

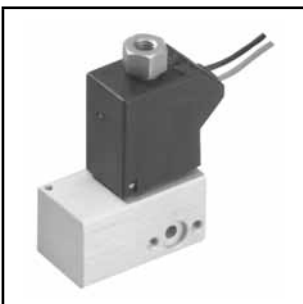
Type:

Series 188 stainless steel pilot valve with flanged connections

Application:

3/2-way, normally closed, direct operated solenoid valve, used as vacuum breaker valve for pumps.

This design is particularly recommended for medical and analytical analysers.



Type:

Long-stroke piston valve

Application:

3/2-way, direct operated solenoid valve with integrated long-stroke piston for use in dentistry.