

JOUCOMATIC

ISO 15407-1 - VDMA 24563 subbase-mounted body

SPOOL VALVES

solenoid air operated

CNOMO pilots, size 15



5/2-5/3

Series

538

Type

ISO size 02 (18 mm)

FEATURES

- Spool valves intended for use in potentially explosive atmospheres caused by gases, vapours, mists an/or dusts (**ATEX directive 94/9/EC**).
Classification : Ex II 2 GD c Ta 50°C T 85°C (T6) (**Zone 1-21**)
Ex II 3 GD c Ta 50°C T 85°C (T6) (**Zone 2-22**)
- Compliance with the Essential Health and Safety Requirements has been assured by compliance with European Standards EN 13463-1 and EN 13463-5.

GENERAL

Fluid Air or neutral gaz, filtered, lubricated or not
Operating pressure 1,5 to 8 bar (with internal supply to pilot)
0 to +8 bar (with external supply to pilot)
Ambient temperature +5°C to +50°C
Flow (Qv at 6 bar) 500 l/min (ANR) - Kv : 7,2
Subbase Single or joinable subbases



CONSTRUCTION

SPOOL VALVES

Body Light alloy
End covers POM (polyacetal)
Internal parts Stainless steel, light alloy, POM (acetal resin)
Seals NBR (nitrile)
PILOTS (see X019 pages 130-120-115)

PILOTS ELECTRICAL CHARACTERISTICS: see following page

SPECIFICATIONS precise catalogue numbers: **spool valves + ATEX option + pilots**

function symbol	operators solenoid air operated pilot (14) return (12)	pilot pressure (bar)		2 catalogue numbers				
		min.	max.	spool valve without manual testers	+	solenoid valve quantity and cat. n° with connector	(W)	(M)
5/2	differential return	1,5	8 (1)	53890026	+ 1x	30211109NAD	1	▼
	solenoid air return	1	8 (1)	53890027		30211110NAD	1	●
5/3	pressure held W1	1,5	8 (1)	53890028	+ 2x	30215106IAD	0,5	▼
	pressure applied W2	1,5	8 (1)	53890029		30215107IAD	0,5	●
	pressure release W3	1,5	8 (1)	53890030		63000043	0,046	×
						63000045	0,046	▼
						to see our complete range of pilots pages : X019(130-120-115)		

(M) Type of manual operator on pilot(s): X: without ●: maintained ▼: impulse
(1) The pressure max. can be limited by the pilot pressure

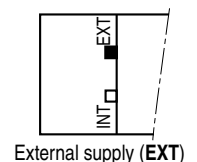
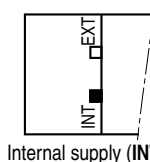
- catalogue number option ATEX zone 1-21: **612036**
- catalogue number option ATEX zone 2-22: **612035**

Ordering example:

cat. number spool valve cat. number option ATEX pilot quantity + cat. number + voltage
53890027 + 612035 + 2 x 30211109NAD 24V DC

PILOTING SUPPLY

The spool valve is equipped with seals which allow either :
- internal supply (mark **INT**)
- external supply (mark **EXT**)
External supply allows use of this material for fluids from 0 to 8 bar
*The equipment is supplied with internal supply (mark **INT**)*



00532GB-2008/R01 Availability, design and specifications are subject to change without notice. All rights reserved.

PILOTS ELECTRICAL CHARACTERISTICS

type of sol. valve	coil size	classification	voltage	consumption	insulation class	protection degree	electrical connection
series 302 nA	size 15	II 3 G EEx nA IIC T6-T5 II 3 D IP65 T 85°C or T 100°C	~ 24V-115V = 12V-24V	1 W	F	IP65	connector size 15, spade plug, DIN 43650, 9,4mm, industrial standard B
series 302 ia	size 15	II 1 G EEx ia IIC T6..T4 II 1 D IP6X T 85°C to T 135°C	12V-24V =	0,5 W	F	IP65	connector size 15, spade plug, DIN 43650, 9,4mm, industrial standard B + LED and protection
series 630 ia	size 15	II 1 GD IP65 EEx ia IIc T6	24V =	0,046 W	F	IP65	connector size 15, spade plug, DIN 43650, 9,4 mm, industrial standard B,

COILS TEMPERATURE CLASSIFICATION TABLE

Operator for explosive atmospheres

Pilot 302 nA

Pn (Watt)	max. ambient °C ⁽¹⁾						insulation class F (155°C) 100% E.D.	
	surface temperature							
	T6 85°C		T5 100°C		T4 135°C			
	V =	V ~	V =	V ~	V =	V ~		
1			60	60			spool valve on single subbase	
	60	40					spool valve on joinable subbases	

⁽¹⁾ Minimum ambient temperature: -25°C

Pilot 302 ia

Pn (Watt)	max. ambient °C ⁽¹⁾						insulation class F (155°C) 100% E.D.	
	surface temperature							
	T6 85°C		T5 100°C		T4 135°C			
	12V	24V	12V	24V	12V	24V		
0,5	40	40	50	60	60	60	spool valve on single subbase	
					50	50	spool valve on joinable subbases	

⁽¹⁾ Minimum ambient temperature: -10°C

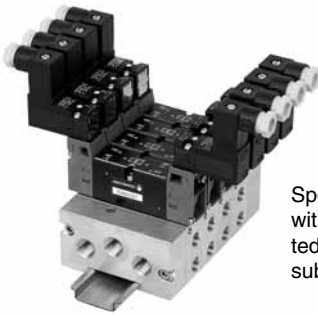
Pilot 630 ia

Pn (Watt)	max. ambient °C ⁽¹⁾			
	surface temperature			
	T6 85°C	T5 100°C	T4 135°C	T3 200°C
0,046	50			

⁽¹⁾ Minimum ambient temperature: -20°C

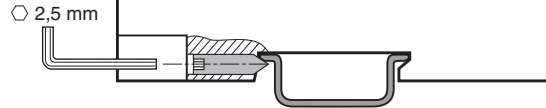
SUBBASES

subbase	size	connection	description	port connection			catalogue number
				1-3-5	2-4	12-14	
single subbase	ISO 02	side	subbase	G 1/8	G 1/8	M5	35500525
joinable subbases	ISO 02	bottom	subbase	-	G 1/8	M5	35500527
			set of 2 end plates	G 1/4	-	-	88135539
			set of 3 plugs on main pressure (1) and exhausts (3-5) for 2 different pressure supplies (see below)				88135541

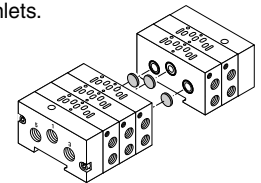
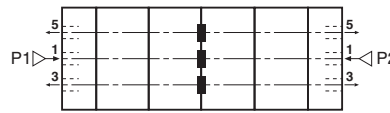


Spool valves with subbase mounted pilots on joinable subbases

Joinable subbases ISO 02 can be mounted on symmetrical EN 50022 profile with hexagon screws.

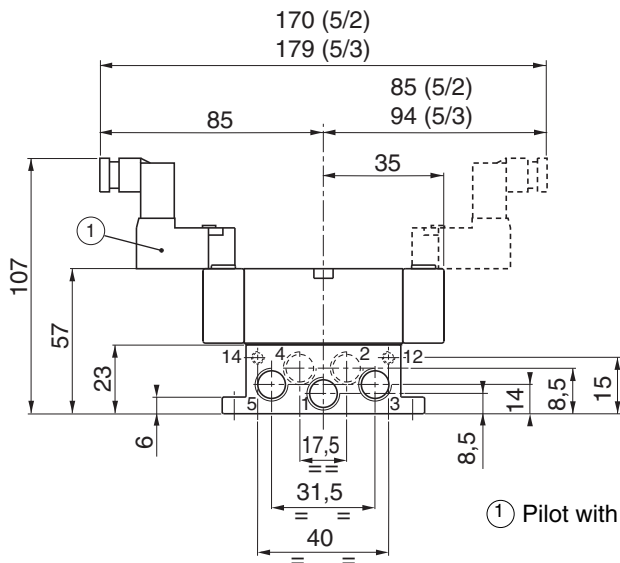


A mounting principle of a plug set: this device allows joinable subbases to be supplied with 2 different pressure inlets.



DIMENSIONS (mm), WEIGHT (kg)

Spool valve with integrated pilots on single subbase

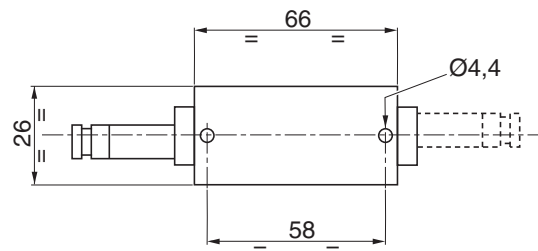


① Pilot with connector size 15.

weight	
spool valve + subbase	
with 1 pilot	with 2 pilots
0,220	0,300

n° ports	Ø ports
1-3-5	G 1/8
2-4	G 1/8
12-14	M5

View from below



00532GB-2008/R01 Availability, design and specifications are subject to change without notice. All rights reserved.

