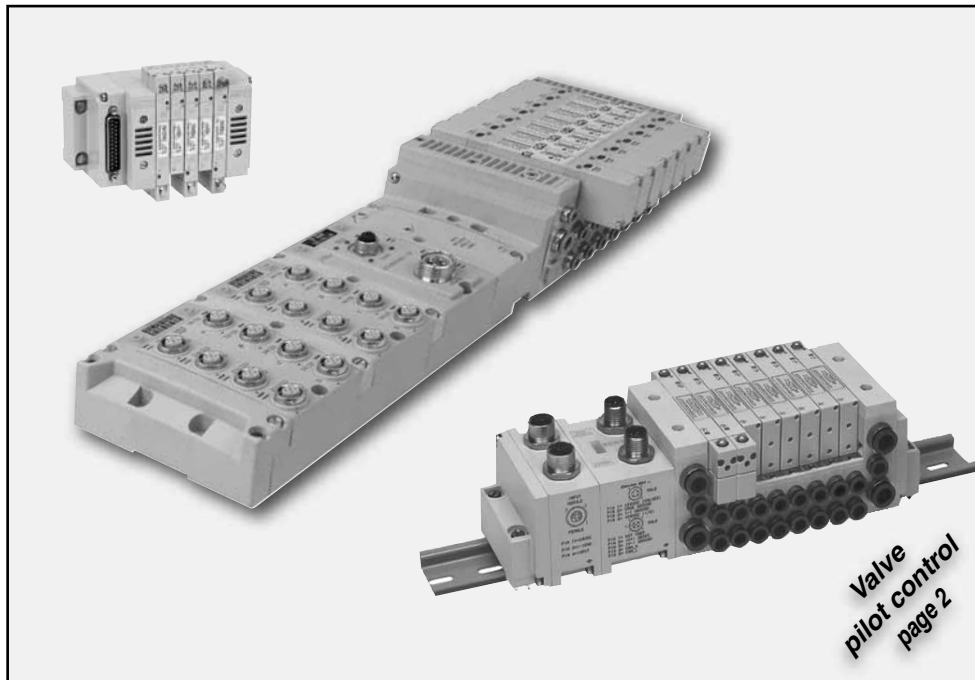



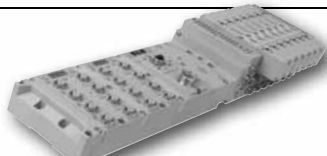


VALVE ISLANDS VALVE PILOT CONTROL

Product Index

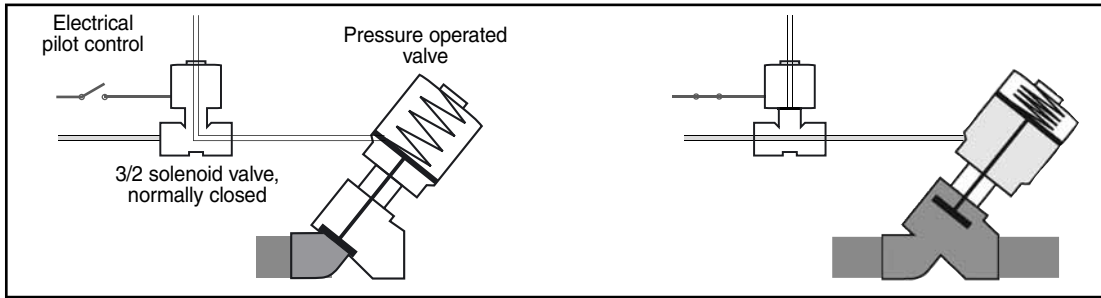


Description	Series	Page
VALVE ISLANDS WITH MULTIWIRE CABLE CONNECTION (MULTIPOL)		
Series 2000		
	2002-2005 2012-2035	V1287
VALVE ISLANDS WITH FIELDBUS CONTROL (BUSLINK)		
Series 2000, compatible with communication protocols such as: Fieldbus Foundation / DeviceNet™ / Ethernet/IP™ / Modbus TCP / PROFIBUS DP / PROFINET / Can Open / DeviceLogix / Control-Net / AS-Interface / Interbus-S / Allen Bradley 1771 Remote E/S / FIPIO		
	G2-2 / G3 2002-2005 2012-2035	V1287

(For detailed information on these products, please see: www.asconumatics.eu)



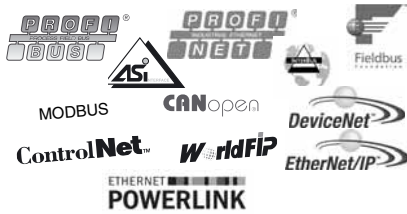
Pressure operated valves can be remotely piloted with a valve island.



Valve islands Series 2000

Several spool valves, each with two 3/2 solenoid pilot valves NC, enable the control of up to 32 valves.

- IP65 protection
- Central electrical connection
- Threaded or instant fitting pneumatic connections
- Compatible with the following fieldbuses:



- Valve islands with fieldbus control intended for use in potentially explosive atmospheres (Ex)
- Optional subbase with pressure isolation for assembly/disassembly without having to disconnect the pressure supply

Central electrical pilot control

or fieldbus control

Series G2-1 / 2002
2x3/2
0,75 W per valve

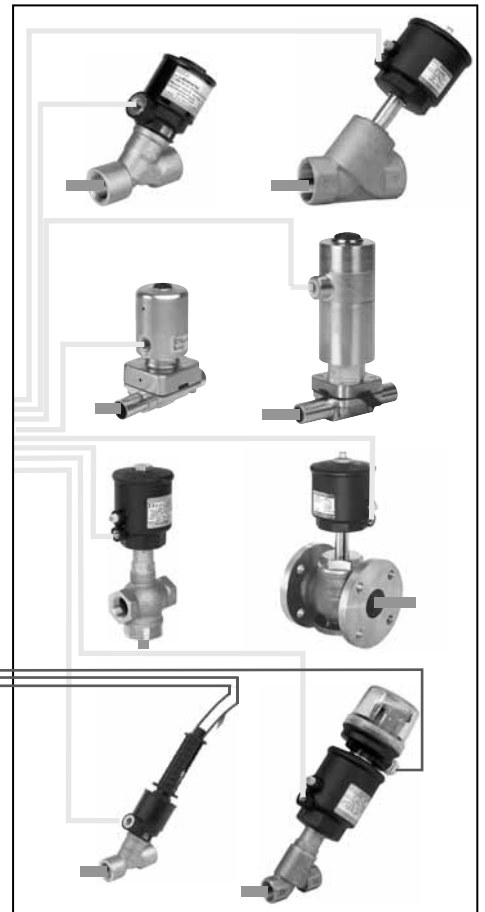
page V1287

Compressed air

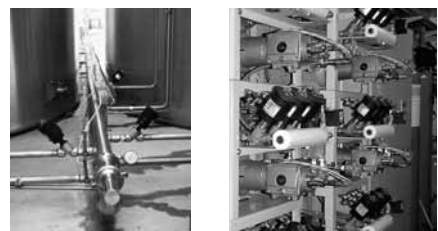
Series G3 / 2005
5/2 or 2x3/2
0,75 W / 2,5W per valve

input module

page V1287



The valve islands can be grouped together in one place. Cabinet installation for use in "aggressive" environments. Reduced electrical wiring. Low power consumption.



For more information on valve islands, please see our catalogue "Pneumatic Components for Industrial Automation" .