

FEATURES

- All the exhaust ports of this spool valve are connectable, providing better environmental protection, particularly recommended for sensitive areas, such as clean rooms, and applications in the pharmaceutical and food processing sectors
- The valves offer environmental protection against the ingress of liquids, dusts or other foreign matter (environmentally-protected construction)
- Solenoid pilot valve with spade-plug connector type DIN 43650, industry standard, form B with 9,4 mm spacing, or to ISO 15217/DIN 43650 form C with 8 mm spacing. Versions with M12 connector and cable ends
- Solenoid pilot valve, CNOMO size 15 interface, with or without integral LED and electrical protection. LED indicator visible from 3 sides
- The monostable spool valves have TÜV certified IEC 61508 Functional Safety data and can be used up to SIL 4/AK 7
- The solenoid valves satisfy all relevant EC Directives

GENERAL

Differential pressure 2 - 10 bar [1 bar = 100 kPa]
Flow (Qv at 6 bar) 860 l/min (ANR)
Pilot mounting interface surface ISO 15218 (CNOMO E06.36.120N, size 15)

fluids (*)	temperature range (TS)	seal materials (*)
air, inert gas, filtered	- 25°C to + 40°C	VMQ (silicone) + PUR (polyurethane)

MATERIALS IN CONTACT WITH FLUID

(*) Ensure that the compatibility of the fluids in contact with the materials is verified
Body, end covers, seats Brass
Spool valve internal parts Brass, stainless steel, POM
Pilot body PAA
Pilot internal parts POM, PET, stainless steel and brass
Pneumatic interface seal TPE

ELECTRICAL CHARACTERISTICS

Coil insulation class F
Connector (types 05/06) Spade plug (cable Ø 6 - 7 mm)
Connector specification Type 05: DIN 43650, 9,4 mm, industry standard B
 Type 06: ISO 15217 / DIN 43650, 8 mm, form C
 Type 07: M12 (CNOMO E03.62.520.N)
 Type 08: cable ends (length 0,3 m), EN 60730
Connection IEC 335
Electrical safety Moulded IP65 [05/06] or IP67 [07/08] (EN 60529)
Standard voltages DC (=): 24V
 AC (~): 24V-115V-230V / 50 Hz (prefixes CFSC/CFSD)
 (Other voltages and 60 Hz on request)

prefix option	power ratings				operator ambient temperature ranges (TS) (°C)	voltage		type ⁽¹⁾
	inrush ~	holding ~		hot/cold =		~	=	
		(VA)	(VA)					
CFSC CFSD	1,4	1,2	1,1	1/1,2	-25 to + 60	24-115	24	05-06
	2,1	1,6	1,5	-	-25 to + 60	230	-	
	1,8 ⁽²⁾	1,6 ⁽²⁾	1,5 ⁽²⁾	1,15/1,35 ⁽²⁾	-25 to + 60	24-115	24	
	2,5 ⁽²⁾	2 ⁽²⁾	1,9 ⁽²⁾	-	-25 to + 50	230	-	
CFVT ⁽³⁾	-	-	-	1,15/1,35	-25 to + 60	-	24	07
CFL ⁽³⁾	-	-	-	-	-	-	24	08

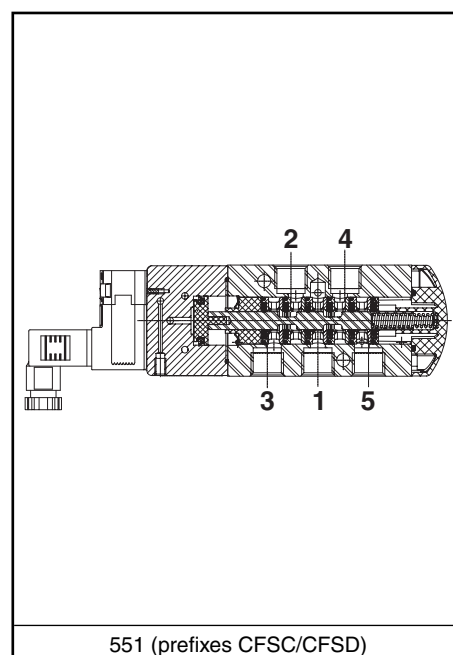
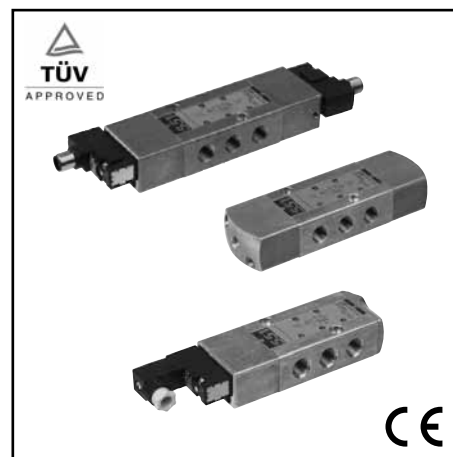
⁽¹⁾ Refer to the dimensional drawings on the following page.

⁽²⁾ Values with LED indicator and protection, use TPL 20674.

⁽³⁾ Supplied with LED indicator and protection.

SPECIFICATIONS

pipe size	orifice size	flow coefficient Kv	operating pressure differential (bar)				power coil (W)	catalogue number				options			
			min.	max. (PS)		connector DIN 43650, 9,4 mm (type 05)		connector DIN 43650, 8 mm (type 06)	M12 (type 07)	cable ends (type 08)	maintained man. operator	impulse man. operator			
				~	=								~	=	
(G)	(mm)	(m³/h)/(l/min)													
5/2 - Solenoid air pilot operated - spring return (monostable)															
1/4	6	0,75	12,5	2	10	10	1,1...1,9	1,2/1,35	CFSCG551C519	CFSDG551C519	-	-	MS	MO	-
							-	1,35	-	-	CFVTG551C519	CFLG551C519	MS	MO	-
5/2 - Solenoid air pilot operated and return (bistable)															
1/4	6	0,75	12,5	2	10	10	1,1...1,9	1,2/1,35	CFSCG551C520	CFSDG551C520	-	-	MS	MO	-
							-	1,35	-	-	CFVTG551C520	CFLG551C520	MS	MO	-
5/2 - Solenoid air pilot operated - spring return (monostable), certified IEC 61508 Functional Safety data															
1/4	6	0,75	12,5	2	10	10	1,1...1,9	1,2/1,35	CFSCG551C519SL	CFSDG551C519SL	-	-	-	MO	-
							-	1,35	-	-	CFVTG551C519SL	CFLG551C519SL	-	MO	-



551 (prefixes CFSC/CFSD)

G

OPTIONS

- Versions: - pilot air operated, spring return, catalogue number: **G551A119** (1/4)
- pilot air operated and return, catalogue number: **G551A120** (1/4)
- Suffix "GD" (air operated only, ATEX 2GD c)
- Explosionproof enclosures for use in zones 0/20-1/21-2/22, categories 1-2-3 to ATEX Directive 94/9/EC (see "Explosionproof Solenoids" section)
- LED and protection, prefixes CFSC / CFSD, use TPL number: TPL 20674 (e.g.: CFSDXG551C507**TPL20674**)
- Straight M12 connector: cable entry Ø4 to 6 mm (catalogue number **88100304**);
with 2 m cable length (catalogue number **88100726**); with 5 m cable length (catalogue number **88130212**)
- Supply rail
- Other pipe threads are available on request
- Plug with visual indication and peak voltage suppression or with cable length of 2m (see Solenoids, Coils & Accessories section)

INSTALLATION

- The solenoid valves can be mounted in any position without affecting operation
- It is necessary to connect pipes or fittings to the exhaust ports to protect the internal parts of the spool valve and its pneumatic operator if used outside or in harsh environments (dusts, liquids etc.)
- IEC 61508 Functional Safety (suffix SL), allowable temperature range: -40°C to +60°C. For probability of failure, contact us
- Threaded pipe connection identifier is G = G (ISO 228/1)
- Valves with suffix "SL" are supplied with specific exhaust protectors
- Installation/maintenance instructions are included with each valve

ACCESSORIES

series	pipe size	exhaust protector
		stainless steel
551	G 1/4	34600419 ⁽¹⁾
551	M5	34600484 ⁽¹⁾

⁽¹⁾ Supplied with suffix "SL".

ORDERING EXAMPLES:

CFSC	G	551	C	519	230V / 50 Hz
CFSD	G	551	C	519	SL 115V / 50 Hz
CFVT	G	551	C	520	MS 24V / DC
CFL	G	551	C	519	SLMO 230V / 50 Hz
	G	551	A	119	SL

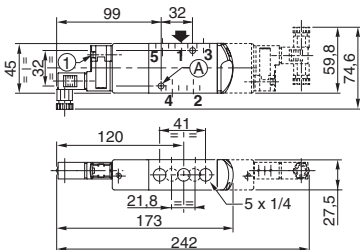
prefix — pipe thread — basic number — voltage — suffix

DIMENSIONS (mm), WEIGHT (kg)



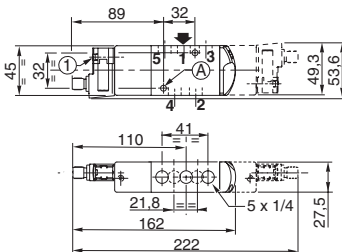
TYPE 05-06

Prefixes "CFSC" / "CFSD"
Polyarilamide
IEC 335 / IP65
Type 05: DIN 43650, 9,4 mm
Type 06: DIN 43650, 8 mm



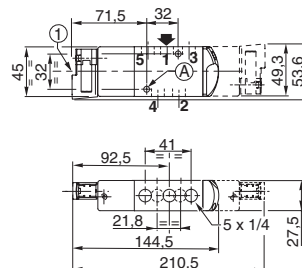
TYPE 07

Prefix "CFVT"
Polyarilamide
IEC 335 / IP67
M12



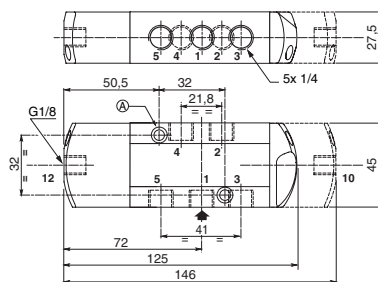
TYPE 08

Prefix "CFL"
Polyarilamide
IEC 335 / IP67
Cable ends (length 0,3 m)



TYPE 09

Air operated version
No prefix
Use suffix "SL", "GD" or "GDSSL"
IP65



type	prefix option	weight ⁽²⁾	
		monostable	bistable
05	CFSC	0,966	1,175
06	CFSD	0,966	1,175
07	CFVT	0,966	1,175
08	CFL	0,959	1,161
09	-	0,914	1,071

① Manual operator location

2 mounting holes:

Ⓐ 5,3 mm dia. (Spotfacing: 9 mm dia., depth 5 mm)

⁽²⁾ Prefixes CFSC/CFSD: including connector(s).

All leaflets are available on: www.asconumatics.eu